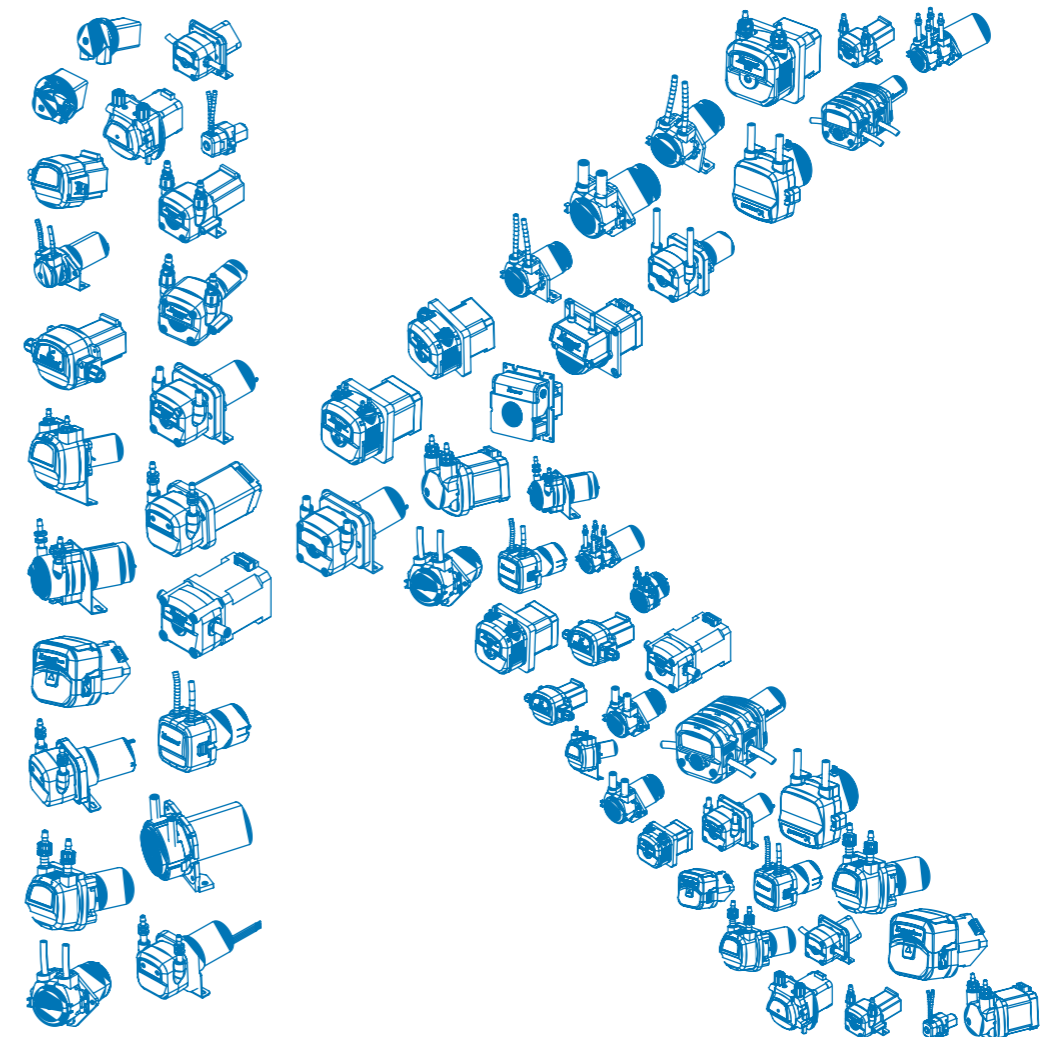




Accurate and Reliable
Fluid Transfer



Product Catalogue

Peristaltic Pumps
Diaphragm Pumps
Accessories

2025-2026



Kamoer Fluid Tech (Shanghai) Co., Ltd.
Tel: +86 13601747816
Web: www.kamoer.com
Mail: krismile@kamoer.com
Add: Building 4, No. 79 Xiangjing Road, Shanghai, China

About Kamoer




20 Years of Microfluidic Expertise
World-class Reliable Micro-Pump Leader

Kamoer is a high-tech enterprise specializing in the R&D, production, and sales of microfluidic core components. We are committed to building a complete fluid ecosystem through innovative technology, providing global customers with precise and reliable fluid transfer solutions.

 **100+**
countries

 **20000+**
customers

 **550+**
patents

KAMOER'S PRODUCT LINE

The company's product line encompasses peristaltic pumps, positive pressure air pumps, vacuum pumps, diaphragm liquid pumps, syringe pumps, gear pumps, process and laboratory pumps, solenoid valves, pump tubing, fittings, and related accessories. These products are widely used in numerous fields such as medical devices, environmental monitoring, scientific instruments, inkjet printing, food and beverage, and consumer electronics.

MICROFLUIDICS LEADER

As a leading enterprise in China's microfluidic core components sector, Kamoer boasts over 200 skilled professionals, a 15,000m² intelligent manufacturing base, and a 1,200m² R&D center. The company possesses an industry-leading R&D team and a comprehensive knowledge management system, having accumulated over 550 national patents and 38 software copyrights. Its innovative fluid solutions have been successfully validated in more than 10,000 application scenarios.

Kamoer has repeatedly received certifications such as Shanghai 'Specialized, Refined, Unique, and New' Enterprise and National High-Tech Enterprise. The company has passed ISO 9001:2021& ISO 13485:2016 quality management system certification, and its products comply with CE and RoHS standards. Currently, Kamoer is comprehensively advancing the development of a lean and intelligent factory to achieve excellent quality through even higher standards.

GLOBAL SERVICE

To realize the vision of "Making fluidic technology flourish globally", Kamoer has built a comprehensive global service system. With its headquarters in Shanghai as the core, we have established branches in Beijing and Shenzhen, and have built a sales network covering more than 100 countries including the United States, the United Kingdom, Germany, France, India, Israel, and South Korea, ensuring support for global customers.

In the future, we will continue to be customer-demand-oriented, adhere to technological innovation and the principle of altruism and win-win cooperation, drive the advancement of fluid technology, enable the fluidic ecosystem to benefit all humankind, and jointly create an even better future!

OUR WORKSPACE



AUTHORITATIVE CERTIFICATION



High-tech
Enterprise



ISO 9001
Certification



CE & RoHS
Certification



SGS
Certification



Patent
Certificate



CONTENTS

PERISTALTIC PUMPS

Original Series Flow range:1-550ml/min

	NKP Series	1.2-90ml/min	01
	KAS Series	0.1-88ml/min	02
	KFS Series	1-122ml/min	03
	KHPP Series	50-200ml/min	04
	KPAS100 Series	1-550ml/min	05

KK Age Series Flow range:0-3200ml/min

	KMPP Series	1.8-12ml/min	06
	KPAC80	80ml/min	07
	KPST Series	0.1-130ml/min	08
	KPAP Series	0.1-200ml/min	09
	KPA Series	0.1-220ml/min	10
	KPK Series	0.1-550ml/min	11
	KHS Series	30-1900ml/min	12
	KDS Series	55-3200ml/min	13

Metal Series Flow range:0-500ml/min

	KPCS200	0.1-265ml/min	14
	KCS Series	0.01-306ml/min	15
	HPKK400	0.2-500ml/min	16

Bull Head Series Flow range:0-1000ml/min

	EPST Series	0.1-620ml/min	17
	KPHM Series	0.1-1000ml/min	18

Quick Change Flow range:0-7800ml/min

	KPMP10	0.01-5.9ml/min	19
	KKDD Series	400-1600ml/min	20
	KK300 Series	0.1-2000ml/min	21

Multi-channel Flow range:0-3200ml/min

	KMC Series	0.01-29ml/min	22
	Dual-channel Series	13-150ml/min	23

Module Series Flow range:0-1250ml/min

	VIKIPAL 42 Series	0.1-485ml/min	24
	VIKIPAL 42C Series	0.1-485ml/min	25
	VIKIPAL 57C Series	0.1-1450ml/min	26
	MED Series	1-1250ml/min	27





DIAPHRAGM PUMPS

Vacuum Pumps Flow range:0.8-20L/min

	KLVP1.1 Series	0.8-1.2L/min	29
	KVP04 Series	1-1.8L/min	30
	HLVP1.6 Series	1.6-1.8L/min	31
	HLVP3 Series	2-4L/min	32
	KGDP6	6L/min	33
	KLVP5 Series	5-8L/min	34
	KLVP9 Series	2.8-10L/min	35
	KVP8 Series	5-11L/min	36
	HLVP11.96 Series	8.5-10L/min	37
	KP48-V Series	1-12L/min	38
	HLVP10 Series	6-20L/min	39

Positive Air Pumps

Flow range:0.2-20L/min

	EDZP1 Series	0.2-1L/min	40
	KZP Series	7-8L/min	41
	KP48-Z Series	6-12L/min	42
	KZP12 Series	12-20L/min	43



Liquid Pumps

Flow range:10-4000ml/min

	KLP180 Series	160-260ml/min	44
	KP26-L Series	300-500ml/min	45
	HLLP300 Series	280-300ml/min	46
	KLP01.30 Series	350-500ml/min	47
	KLP02.60 Series	450-700ml/min	48
	HLLP600 Series	200-800ml/min	49
	KLP04 Series	240-1000ml/min	50
	KDLP1200 Series	700-4000ml/min	51

Gas-Liquid Mixing

Flow (gas):0.2-12L/min

	KLP100 Series	0.2-1L/min	52
	KLVP6 Series	6-12L/min	53

OTHER PUMPS

Syringe Pumps

	KSY30 Series	50µL-5ml (Syringe size)	55
---	--------------	-------------------------	----

Valveless Piston Pumps






	KPVP100 Series	100~200µL/shot	56
---	----------------	----------------	----

Gear Pumps

Flow range:100-2000ml/min

	KGP200 Series	240-2000ml/min	57
	KMGP1000 Series	100-2000ml/min	58

ACCESSORIES

	Solenoid Valve	59
	Driver Board	62
	Filter / Damper / Silencer	63
	Tubing	65
	Connector	70

Peristaltic Pumps



NKP / KPP

Peristaltic Pump



Main Features

- Flow range: 1.2 - 90ml/min
- Shaft-roller friction drive, cost-effective
- Different tube materials available
- Different motors available
- Compact design



NKP



KPP

Typical Applications

- Hygiene and Disinfection
- Hydroponic Agriculture
- Food and Beverage
- Medical Devices
- Laboratory and Analysis

Specifications

Model	Flow Rate	Motor Type	Voltage	Power	LxWxH (mm)	Web Page
NKP	10-60ml/min	Brushed	6V/12V/24V	5W	67 x 55 x 40	
KPP	1.2-90ml/min	Brushed	3V/6V/12V/24V	5W	67 x 55 x 40	

KAS SERIES

Peristaltic Pump

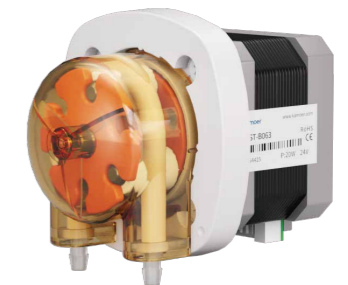


Main Features

- Flow range: 0.1 - 88ml/min
- Stepper motor drive
- Different tube materials available
- Compact design



KAS



KAS-ST

Typical Applications

- Medical Devices
- Laboratory and Analysis
- Chemical Industry
- Environmental Monitoring
- Biopharmaceuticals

Specifications

Model	Flow Rate	Motor Type	Voltage	Power	LxWxH (mm)	Web Page
KAS	11.5-71.5ml/min	Stepper	12V/24V	20W	85 x 44 x 53	
KAS-ST	42-88ml/min	Stepper	12V/24V	20W	65 x 56 x 56	

KFS / KEF

Peristaltic Pump



Main Features

- Flow range: 1 - 122ml/min
- Gear reduction drive
- Different tube materials available
- Different motors available
- Multiple pump head colors available



KFS



KEF

Typical Applications

- Medical Devices
- Laboratory and Analysis
- Chemical Industry
- Environmental Monitoring
- Hydroponic Agriculture

Specifications

Model	Flow Rate	Motor Type	Voltage	Power	LxWxH (mm)	Web Page
KFS	1-85ml/min	Brushed	6V/12V/24V	5W	89 x 57 x 41	
	1.2-122ml/min	Brushless	12V/24V	5W	92 x 57 x 41	
	9-65ml/min	Stepper	24V	10W	80 x 44 x 44	
KEF	12-85ml/min	Brushed	12V/24V	5W	81 x 57 x 41	

KHPP50 / KHPP260

Peristaltic Pump



Main Features

- Flow range: 50 - 200ml/min
- Gear reduction drive
- Compact design
- Cost-effective



KHPP50



KHPP260

Typical Applications

- Medical Devices
- Laboratory and Analysis
- Chemical Industry
- Environmental Monitoring
- Hygiene and Disinfection

Specifications

Model	Flow Rate	Motor Type	Voltage	Power	LxWxH (mm)	Web Page
KHPP50	50ml/min	Brushed	12V/24V	6W	70 x 34 x 35	
KHPP260	140-200ml/min	Brushed	12V/24V	8W	76 x 55 x 44	

KPAS SERIES

Peristaltic Pump



Main Features

- Flow range: 1 - 550ml/min
- Stepper motor drive
- Different tube sizes available
- Compatible with Luer fittings



KPAS100



KPAS100-AC



KPAS300

Typical Applications

- Medical Devices
- Laboratory and Analysis
- Chemical Industry
- Environmental Monitoring
- Biopharmaceuticals

Specifications

Model	Flow Rate	Motor Type	Voltage	Power	LxWxH (mm)	Web Page
KPAS100	32-110ml/min	Stepper	24V	20W	80 x 55 x 78	
KPAS100-AC	4-15ml/min	Synchronous	220V-240V	6W	72 x 70 x 70	
KPAS300	1-550ml/min	Stepper	24V	20W	91 x 67 x 89	

KMPP SERIES

Peristaltic Pump



Main Features

- Flow range: 2 - 12ml/min
- Ultra-compact design
- Powered by DC 3.7V
- Ultra-low power consumption



KMPP



KMPP6

Typical Applications

- Consumer Electronics
- Medical Devices
- Chemical Industry

Specifications

Model	Flow Rate	Motor Type	Voltage	Power	LxWxH (mm)	Web Page
KMPP	1.8ml/min	Brushed	3.7V	0.4W	36 x 24 x 20	
KMPP6	4-12ml/min	Brushed	3.7V	1W	38 x 21 x 22	

KPAC80

Peristaltic Pump



Main Features

- Flow range: 80ml/min
- Synchronous gear motor
- 2-rotor design
- Maintenance free



KPAC80

Typical Applications

- Industrial Automation
- Laundry Equipment
- Consumer Electronics

Specifications

Model	Flow Rate	Motor Type	Voltage	Power	LxWxH (mm)	Web Page
KPAC80	80ml/min	Synchronous	220V-240V	10W	73 x 82 x 75	

KPST SERIES

Peristaltic Pump



Main Features

- Flow range: 0.1 - 130ml/min
- Stepper motor drive
- Different tube sizes available
- 4-rotor design, moderate pulse flow
- Supports dual-tube transfer



KPST



KPST-C

Typical Applications

- Medical Devices
- Laboratory and Analysis
- Chemical Industry
- Environmental monitoring
- Biopharmaceuticals

Specifications

Model	Flow Rate	Motor Type	Voltage	Power	LxWxH (mm)	Web Page
KPST	30-65ml/min	Stepper	24V	20W	75 x 55 x 79	
KPST-C	60-130ml/min	Stepper	24V	20W	83 x 55 x 68	

KPAP40 / KPAP160 / KCM

Peristaltic Pump



Main Features

- Flow range: 0.1 - 200ml/min
- Stepper motor drive
- Different tube sizes available
- Different tube materials available



KPAP40



KPAP160



KCM

Typical Applications

- Medical Devices
- Laboratory and Analysis
- Chemical Industry
- Environmental monitoring
- Biopharmaceuticals

Specifications

Model	Flow Rate	Motor Type	Voltage	Power	LxWxH (mm)	Web Page
KPAP40	40ml/min	Stepper	24V	20W	88 x 76 x 62	
KPAP160	50-105ml/min	Stepper	24V	25W	91 x 60 x 82	
KCM	0.1-200ml/min	Stepper	24V	20W	91 x 67 x 89	

KPA SERIES

Peristaltic Pump



Main Features

- Flow range: 0.1 - 220ml/min
- Different motors available
- Compact design
- Low power consumption



KPA30



KPA100



KPA200

Typical Applications

- Hygiene and Disinfection
- Hydroponic Agriculture
- Food and Beverage
- Medical Devices
- Laboratory and Analysis

Specifications

Model	Flow Rate	Motor Type	Voltage	Power	LxWxH (mm)	Web Page
KPA30	15-35ml/min	Brushed	3V/6V	2W	55 x 22 x 32	
	30-60ml/min		6V/12V	3W	55 x 22 x 34	
KPA100	30-90ml/min	Brushed	12V/24V	5W	62 x 33 x 49	
	0.1-16ml/min	Stepper	24V	10W	68 x 33 x 49	
KPA200	140-220ml/min	Brushed	12V/24V	10W	63 x 44 x 57	
		Brushless			76 x 44 x 57	

KPK SERIES

Peristaltic Pump



Main Features

- Flow range: 0.1 - 550ml/min
- Different tube sizes available
- Different tube materials available
- Different motors available
- Easy tube loading

Typical Applications

- Hygiene and Disinfection
- Hydroponic Agriculture
- Food and Beverage
- Medical Devices
- Laboratory and Analysis



KPK100



KPK200



KPK400

Specifications

Model	Flow Rate	Motor Type	Voltage	Power	LxWxH (mm)	Web Page
KPK100	50-150ml/min	Brushed	12V/24V	6W	68 x 50 x 56	
	50-150ml/min	Brushless	12V/24V	6W	68 x 50 x 56	
	0.1-16ml/min	Stepper	24V	10W	67 x 50 x 56	
KPK200	170-230ml/min	Brushed	12V/24V	10W	62 x 57 x 62	
	150-200ml/min	Brushless	12V/24V	10W	74 x 57 x 62	
KPK400	260-400ml/min	Brushed	12V/24V	10W	111 x 61 x 88	
	230-350ml/min	Brushless	12V/24V	10W	98 x 61 x 88	
	0.1-550ml/min	Stepper	24V	24W	111 x 61 x 88	

KHS2 / KHM3 / KHL2000

Peristaltic Pump



Main Features

- Flow range: 30 - 1900ml/min
- Different tube sizes available
- Different tube materials available
- Different motors available
- Stable performance

Typical Applications

- Food and Beverage
- Medical Devices
- Environmental Monitoring
- Chemical Industry
- Hydroponic Agriculture



KHS2



KHM3



KHL2000

Specifications

Model	Flow Rate	Motor Type	Voltage	Power	LxWxH (mm)	Web Page
KHS2	36-270ml/min	Brushed	12V/24V	10W	105 x 55 x 55	
	30-280ml/min	Brushless	12V/24V	10W	89 x 55 x 55	
KHM3	58-500ml/min	Brushed	12V/24V	12W	112 x 67 x 92	
	50-640ml/min	Brushless	12V/24V	12W	97 x 67 x 92	
KHL2000	930-1450ml/min	Brushed	24V	30W	147 x 168 x 89	
	≥1400ml/min	Short Brushed	24V	15W	131 x 168 x 89	
	≤1900ml/min	Stepper	24V	40W	137 x 168 x 89	

KDS SERIES

Peristaltic Pump



Main Features

- Flow range: 55 - 3200ml/min
- Easy tube loading
- Different tube materials available
- Different motors available
- Stable performance

Typical Applications

- Food and Beverage
- Chemical Industry
- Laundry Equipment
- Industrial Automation
- Hydroponic Agriculture



Specifications

Model	Flow Rate	Motor Type	Voltage	Power	LxWxH (mm)	Web Page
KDS	55-115ml/min	Synchronous	220V-240V	18W	104 x 76 x 98	
	200-420ml/min	Brushless	12V/24V	12W	140 x 76 x 100	
	≤500ml/min	Stepper	24V	24W	94 x 76 x 97	
KDS3000	≥1800ml/min	Brushed	24V	30W	145 x 80 x 126	
	≥1200ml/min	Short Brushed	24V	15W	130 x 80 x 121	
	≤3200ml/min	Stepper	24V	40W	113 x 80 x 126	
KDS5000	≥3000ml/min	Brushed	24V	40W	191 x 100 x 154	
	≥3200ml/min	Brushless	24V	40W	183 x 100 x 154	

KPCS200

Peristaltic Pump



Main Features

- Flow range: 0.1 - 265ml/min
- Spring-loading design
- Quick pump tube change
- Stepper motor drive
- Different tube sizes and materials available

Typical Applications

- Medical Devices
- Laboratory and Analysis
- Chemical Industry
- Environmental Monitoring
- Biopharmaceuticals



KPCS200

Specifications

Model	Flow Rate	Motor Type	Voltage	Power	LxWxH (mm)	Web Page
KPCS200	0.1-265ml/min	Stepper	24V	20W	76 x 70 x 65	

KCS SERIES

Peristaltic Pump



Main Features

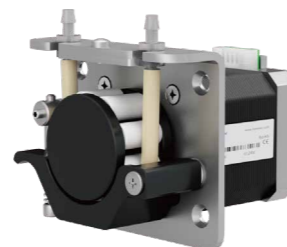
- Flow range: 0.01 - 300ml/min
- Multiple rotor count options available
- Quick pump tube change
- Stepper motor drive
- Different tube sizes and materials available



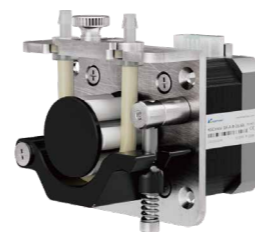
KCS



KCS3



KCS Plus



KCSmini

Typical Applications

- Medical Devices
- Laboratory and Analysis
- Chemical Industry
- Environmental Monitoring
- Biopharmaceuticals

Specifications

Model	Flow Rate	Motor Type	Voltage	Power	LxWxH (mm)	Web Page
KCS	0.1-306ml/min	Stepper	12V/24V	20W	75 x 70 x 72	
KCS3	0.1-300ml/min	Stepper	24V	20W	88 x 70 x 77	
KCS Plus	0.01-170ml/min	Stepper	12V/24V	20W	76 x 70 x 70	
KCSmini	0.01-155ml/min	Stepper	24V	20W	62 x 60 x 62	

HPKK400

Peristaltic Pump



Main Features

- Flow range: 0.2 - 500ml/min
- High-pressure transfer (up to 6 bar)
- Quick pump tube change
- Designed for Radiofrequency Ablation
- Metal casing



HPKK400

Typical Applications

- Medical Devices
- Chemical Industry
- Laboratory and Analysis
- Industrial Applications

Specifications

Model	Flow Rate	Motor Type	Voltage	Power	LxWxH (mm)	Web Page
HPKK400	0.2-260ml/min	Stepper	24V	25W	101 x 110 x 121	
	25-500ml/min	Brushless	24V	75W	108 x 110 x 121	

EPST SERIES

Peristaltic Pump



Main Features

- Flow range: 0.1 - 620ml/min
- Stepper motor drive
- Different tube materials available
- Stable performance



EPST

Typical Applications

- Medical Devices
- Laboratory and Analysis
- Chemical Industry
- Environmental Monitoring
- Food and Beverage



EPST300

Specifications

Model	Flow Rate	Motor Type	Voltage	Power	LxWxH (mm)	Web Page
EPST	540-620ml/min	Stepper	24V	20W	95 x 63 x 63	
EPST300	0.1-280ml/min	Stepper	24V	20W	75 x 45 x 43	

KPHM SERIES

Peristaltic Pump



Main Features

- Flow range: 0.1 - 1000ml/min
- Different tube sizes available
- Different motors available
- Stable performance
- Cost-effective

Typical Applications

- Hygiene and Disinfection
- Hydroponic Agriculture
- Food and Beverage
- Medical Devices
- Laboratory and Analysis



KPHM100



KPHM200



KPHM400



KPHM600



KPHM900

Specifications

Model	Flow Rate	Motor Type	Voltage	Power	LxWxH (mm)	Web Page
KPHM100	90ml/min	Brushed	12V/24V	6W	79 x 43 x 43	
	90ml/min	Brushless	12V/24V	6W	79 x 43 x 43	
	0.1-180ml/min	Stepper	24V	10W	85 x 43 x 43	
KPHM200	200-300ml/min	Brushed	12V/24V	10W	116 x 64 x 63	
	200-300ml/min	Brushless	12V/24V	10W	107 x 69 x 63	
	0.1-300ml/min	Stepper	24V	20W	95 x 64 x 63	
KPHM400	400ml/min	Brushed	12V/24V	10W	112 x 69 x 63	
	400ml/min	Brushless	12V/24V	10W	107 x 69 x 63	
	1-600ml/min	Stepper	24V	20W	95 x 69 x 63	
KPHM600	600ml/min	Brushed	12V/24V	12W	112 x 69 x 63	
	600ml/min	Brushless	12V/24V	12W	107 x 69 x 63	
KPHM900	700-900ml/min	Brushed	12V/24V	22W	154 x 89 x 119	
	100-1000ml/min	Stepper	24V	40W	139 x 89 x 119	

KPMP10

Peristaltic Pump



Main Features

- Flow range: 0.01 - 5.9ml/min
- Stepper motor drive, compact design
- A variety of tube sizes available
- Easy pump head removal
- Designed for bioreactors



KPMP10

Typical Applications

- Biopharmaceuticals
- Medical Devices
- Laboratory and Analysis
- Industrial Applications

Specifications

Model	Flow Rate	Motor Type	Voltage	Power	LxWxH (mm)	Web Page
KPMP10	0.01-5.9ml/min	Stepper	24V	10W	74 x 31 x 48	

KKDD SERIES

Peristaltic Pump



Main Features

- Flow range: 400 - 1600ml/min
- Quick pump tube change
- High flow rate, cost-effective
- Different motors available
- Stable performance



KKDD

Typical Applications

- Food and Beverage
- Chemical Industry
- Industrial Automation
- Hydroponic Agriculture
- Laboratory and Analysis



KKTS

Specifications

Model	Flow Rate	Motor Type	Voltage	Power	LxWxH (mm)	Web Page
KKDD	400-1300ml/min	Brushed	12V/24V	15W	161 x 92 x 97	
KKTS	400-1600ml/min	Stepper	24V	40W	143 x 92 x 97	

KK360 / KK300 / KK2000

Peristaltic Pump



Main Features

- Flow range: 0.1 - 2000ml/min
- Quick pump tube change
- Different motors available
- Different tube sizes and materials available
- Stable performance



KK360



KK300-ST



KK300-D



KK2000

Typical Applications

- Medical Devices
- Laboratory and Analysis
- Chemical Industry
- Environmental Monitoring
- Biopharmaceuticals

Specifications

Model	Flow Rate (ml/min)	Motor Type	Voltage	Power	LxWxH (mm)	Web Page
KK360	0.1-310ml/min	Stepper	24V	20W	119 x 65 x 82	
KK300-ST	1-485ml/min	Stepper	24V	20W	90 x 67 x 67	
KK300-D	14-290ml/min	Brushed	12V/24V	10W	118 x 67 x 67	
KK2000	700-2000ml/min	Stepper	24V	24W	148 x 95 x 100	

KMC SERIES

Multi-channel Peristaltic Pump



Main Features

- Flow range: 0.01 - 29ml/min
- Quick pump tube change
- 12-roller design, high precision, low pulsation
- Different tube sizes available
- Supports 4-channel transmission



KMC



KMC57

Typical Applications

- Medical Devices
- Laboratory and Analysis
- Chemical Industry
- Environmental Monitoring
- Biopharmaceuticals

Specifications

Model	Flow Rate (ml/min)	Motor Type	Voltage	Power	LxWxH (mm)	Web Page
KMC	0.0001-10.3 (per channel)	Stepper	24V	20W	134 x 75 x 85	
KMC57	0.01-29 (per channel)	Stepper	24V	40W	189 x 130 x 130	

DUAL CHANNEL SERIES

Peristaltic Pump



Main Features

- Flow range: 13 - 150ml/min
- Dual-channel transmission
- Different tube sizes available



KPP2



KPST-C



KK360-B

Typical Applications

- Medical Devices
- Laboratory and Analysis
- Chemical Industry
- Environmental monitoring
- Biopharmaceuticals

Specifications

Model	Flow Rate (ml/min)	Motor Type	Voltage	Power	LxWxH (mm)	Web Page
KPP2	12.5-77.5 (per channel)	Brushed	12V/24V	8W	99 x 55x 41	
KPST-C	30-65 (per channel)	Stepper	24V	20W	83 x 56 x 68	
KK360-B	13-150 (per channel)	Stepper	24V	20W	119 x 65 x 82	

VIKIPAL 42 SERIES

Peristaltic Pump Module



Main Features

- Flow range: 0.1 - 485ml/min
- Stepper motor drive
- Integrated drive control board
- Multiple control modes
- Different pump heads available



VIKIPAL 42 -KK300

Typical Applications

- Medical Devices
- Laboratory and Analysis
- Chemical Industry
- Environmental Monitoring
- Biopharmaceuticals

Specifications

Model	Flow Rate	Motor Type	Voltage	Power	LxWxH (mm)	Web Page
VIKIPAL 42 -KPAS100	32-110ml/min	Stepper	24V	20W	100 x 76x 83	
VIKIPAL 42 -KCS3	0.1-300ml/min	Stepper	24V	20W	95 x 72 x 82	
VIKIPAL 42 -KK300	1-485ml/min	Stepper	24V	20W	111 x 82 x 82	

VIKIPAL 42C SERIES

Peristaltic Pump Module



Main Features

- Flow range: 0.1 - 485ml/min
- Closed-loop motor drive
- Integrated drive control board
- Easy to configure and operate
- Different pump heads available

Typical Applications

- Medical Devices
- Laboratory and Analysis
- Chemical Industry
- Environmental Monitoring
- Biopharmaceuticals



VIKIPAL 42C-KCS3



VIKIPAL 42C-KK300



VIKIPAL 42C-KK360

Specifications

Model	Flow Rate	Motor Type	Voltage	Power	LxWxH (mm)	Web Page
VIKIPAL 42C-KCS3	0.1-225ml/min	Closed Loop Stepper	12V~36V	8W	104 x 70x 74	
VIKIPAL 42C-KK300	0.1-170ml/min	Closed Loop Stepper	12V~36V	20W	105 x 82x 82	
VIKIPAL 42C-KK360	0.1-310ml/min	Closed Loop Stepper	12V~36V	20W	115 x 82x 82	

VIKIPAL 57C SERIES

Peristaltic Pump Module



Main Features

- Flow range: 0.1 - 1450ml/min
- Closed-loop motor drive
- Integrated drive control board
- Easy to configure and operate
- Different pump heads available

Typical Applications

- Medical Devices
- Laboratory and Analysis
- Chemical Industry
- Environmental Monitoring
- Biopharmaceuticals



VIKIPAL 57C-KK1800



VIKIPAL 57C-KK2000

Specifications

Model	Flow Rate	Motor Type	Voltage	Power	LxWxH (mm)	Web Page
VIKIPAL 57C-KK1800	0.1-1450ml/min	Closed Loop Stepper	12V~36V	30W	148 x 113 x 112	
VIKIPAL 57C-KK2000	0.1-1428ml/min	Closed Loop Stepper	12V~36V	30W	163 x 95 x 90	

KCM-ODM / MED42 / MED57

Peristaltic Pump Module

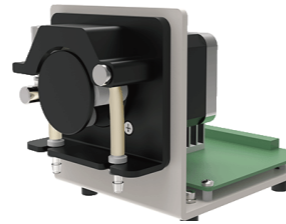


Main Features

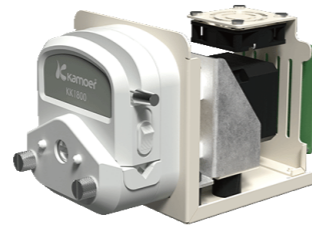
- Flow range: 1 - 1520ml/min
- Stepper motor drive
- Integrated drive control board
- Multiple control modes



KCM-ODM



MED42-KCS



MED57-KK1800

Typical Applications

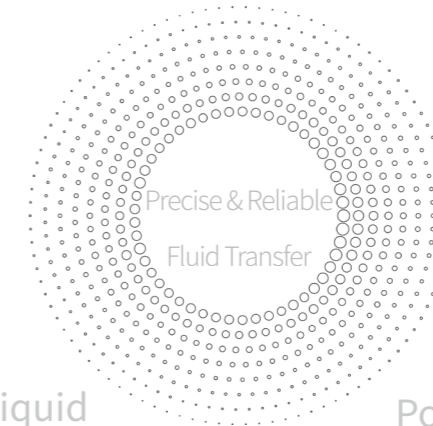
- Medical Devices
- Laboratory and Analysis
- Chemical Industry
- Environmental Monitoring
- Biopharmaceuticals

Specifications

Model	Flow Rate	Motor Type	Voltage	Power	LxWxH (mm)	Web Page
KCM-ODM	1-450ml/min	Stepper	12V/24V	50W	126 x 65 x 69	
MED42-KCS	12-306ml/min	Stepper	24V	48W	129 x 82 x 93	
MED57-KK1800	70-1520ml/min	Stepper	24V	75W	220 x 120 x 122	

Diaphragm Pumps

Vacuum Pumps



Diaphragm Liquid Pumps



Positive Air Pumps



KLVP1 / KLVP1.1 / KLVP08

Vacuum Pump



Main Features

- Flow range: 0.8 - 1.2L/min
- Maintenance free
- Different motors available
- Enabling continuous duty operation
- Compact design



KLVP1.1



KLVP1



KLVP08

Typical Applications

- Environmental Monitoring
- Analytical Instruments
- Industrial Automation
- Medical Devices
- Consumer Electronics

Specifications

Model	Flow Rate	Negative Pressure	Motor Type	Voltage	Power	LxWxH (mm)	Web Page
KLVP1.1	≥1.1L/min	≤-0.05MPa	Brushless	6V/12V/24V	3W	40 x 25 x 38	
KLVP1	≥1.2L/min	≤-0.05MPa	Brushed	12V/24V	2W	41x 25 x 40	
			Brushless	6V/12V/24V			
KLVP08	≥0.8L/min	≤-0.05MPa	Brushed	6V/12V/24V	3W	51x 24 x 40	

KVP04 / KVP20 / HDVP1

Vacuum Pump



Main Features

- Flow range: 1 - 1.8L/min
- Maintenance free
- Different motors available
- Enabling continuous duty operation
- Compact design



KVP04



KVP20



HDVP1

Typical Applications

- Environmental Monitoring
- Analytical Instruments
- Printing Machines
- Medical Devices
- Consumer Electronics

Specifications

Model	Flow Rate	Negative Pressure	Motor Type	Voltage	Power	LxWxH (mm)	Web Page
HDVP1	≥1.0L/min	≤-0.04MPa	Brushless	6V/12V/24V	3W	62 x 27 x 27	
KVP04	≥1.1L/min	≤-0.04MPa	Brushless	12V/24V	5W	61 x 27 x 27	
KVP20	≥1.8L/min	≤-0.04MPa	Brushed	12V/24V	5W	61 x 27 x 27	

HLVP1.6 / KLVP2

Vacuum Pump



Main Features

- Flow range: 1.6 - 1.8L/min
- Ultra-compact design
- Maintenance free
- Enabling continuous duty operation
- Low power consumption



HLVP1.6



KLVP2

Typical Applications

- Environmental Monitoring
- Analytical Instruments
- Industrial Automation
- Medical Devices
- Consumer Electronics

Specifications

Model	Flow Rate	Negative Pressure	Motor Type	Voltage	Power	LxWxH (mm)	Web Page
HLVP1.6	≥1.6L/min	≤-0.03MPa	Brushed	6V	0.8W	45 x 17 x 29	
			Brushless	3.7V	1.5W		
KLVP2	≥1.8L/min	≤-0.03MPa	Brushed	3.7V	1.5W	43 x 23 x 33	
			Brushless	3.7V	1W	45 x 23 x 33	

HLVP3 / KLVP3 / KLVP2.8

Vacuum Pump



Main Features

- Flow range: 2 - 4L/min
- Maintenance free
- Different motors available
- Enabling continuous duty operation
- Compact design



HLVP3



KLVP3-S



KLVP3-D



KLVP2.8

Typical Applications

- Environmental Monitoring
- Analytical Instruments
- Industrial Automation
- Medical Devices
- Consumer Electronics

Specifications

Model	Flow Rate	Negative Pressure	Motor Type	Voltage	Power	LxWxH (mm)	Web Page
HLVP3	≥3L/min	≤-0.06MPa	Brushless	12V/24V	5W	68 x 32 x 50	
KLVP3-S	≥2L/min	≤-0.05MPa	Brushed/Brushless	12V/24V	2.5W	59 x 38 x 38	
	≥2.5L/min	≤-0.05MPa	Enhanced Brushless	12V/24V	4W	58 x 38 x 38	
KLVP3-D	≥4L/min	≤-0.05MPa	Brushless	12V/24V	5W	60 x 50 x 25	
KLVP2.8	≥2.8L/min	≤-0.06MPa	Brushless	12V/24V	3.5W	63 x 50 x 25	

KGDP6

Vacuum Pump



Main Features

- Flow rate: $\geq 6\text{L/min}$
- Maintenance free
- 220V shaded-pole motor
- Enabling continuous duty operation
- All-metal housing, excellent heat dissipation



KGDP6

Typical Applications

- CEMS (Continuous Emission Monitoring System)
- Analytical Instruments
- Chemical Industry

Specifications

Model	Flow Rate	Negative Pressure	Motor Type	Voltage	Power	LxWxH (mm)	Web Page
KGDP6	$\geq 6\text{L/min}$	$\leq -0.065\text{MPa}$	Shaded-pole	220V	40W	127 x 64 x 140	

KLVP5 / KVP300 / HLVP6

Vacuum Pump



Main Features

- Flow range: 5 - 8L/min
- Maintenance free
- Different motors available
- Enabling continuous duty operation
- Compact design



KLVP5



KLVP5.1



KVP300



HLVP6

Typical Applications

- Environmental Monitoring
- Analytical Instruments
- Industrial Automation
- Medical Devices
- Consumer Electronics

Specifications

Model	Flow Rate	Negative Pressure	Motor Type	Voltage	Power	LxWxH (mm)	Web Page
KLVP5	$\geq 5\text{L/min}$	$\leq -0.06\text{MPa}$	Brushed/ Brushless	12V/24V	5W	82 x 31 x 55	
KLVP5.1	$\geq 5\text{L/min}$	$\leq -0.05\text{MPa}$	Brushless	6V/12V	4.5W	50 x 30 x 45	
KVP300	$\geq 6\text{L/min}$	$\leq -0.05\text{MPa}$	Brushed/ Brushless	12V/24V	8W	106 x 31 x 55	
HLVP6	$\geq 6\text{L/min}$	$\leq -0.05\text{MPa}$	Brushless	12V/24V	5W	77 x 42 x 81	
	$\geq 8\text{L/min}$	$\leq -0.06\text{MPa}$	Enhanced Brushless		8W		

KLVP9 / KLVP10

Vacuum Pump



Main Features

- Flow range: 2.8 - 10L/min
- Maintenance free
- Different motors available
- Enabling continuous duty operation
- High vacuum pressure



KLVP9



KLVP10

Typical Applications

- Environmental Monitoring
- Analytical Instruments
- Industrial Automation
- Medical Devices
- Consumer Electronics

Specifications

Model	Flow Rate	Negative Pressure	Motor Type	Voltage	Power	LxWxH (mm)	Web Page
KLVP9	≥2.8L/min	≤-0.09MPa	Brushed/ Brushless	12V/24V	8W	96 x 68 x 30	
KLVP10 (in series)	≥6L/min	≤-0.09MPa	Brushless	12V/24V	15W	102 x 89 x 60	
KLVP10 (in parallel)	≥10L/min	≤-0.07MPa					

KVP8 / KVP8 PLUS / HLVP8

Vacuum Pump

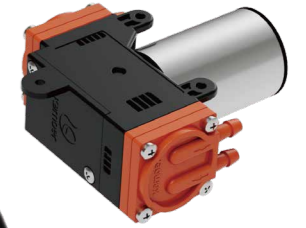


Main Features

- Flow range: 5 - 10L/min
- Maintenance free
- Different motors available
- Enabling continuous duty operation
- Compact design



KVP8



KVP8 PLUS



HLVP8



HLVP8-2

Typical Applications

- Environmental Monitoring
- Analytical Instruments
- Industrial Automation
- Medical Devices
- Consumer Electronics

Specifications

Model	Flow Rate	Negative Pressure	Motor Type	Voltage	Power	LxWxH (mm)	Web Page
KVP8 (in parallel)	≥8L/min	≤-0.06MPa	Brushed/ Brushless	6V/12V/24V	8W	100 x 76 x 31	
KVP8 (in series)	≥5L/min	≤-0.082MPa					
KVP8 PLUS (in parallel)	≥10L/min	≤-0.07MPa	Brushed/ Brushless	12V/24V	9W	100 x 76 x 31	
KVP8 PLUS (in series)	≥6.3L/min	≤-0.09MPa					
HLVP8 (in parallel)	≥8L/min	≤-0.07MPa	Brushed/ Brushless	12V/24V	12W	76 x 72 x 59	
HLVP8 (in series)	≥6L/min	≤-0.09MPa					
HLVP8-2	≥6L/min	≤-0.098MPa	Brushless	12V/24V	18W	123 x 76 x 31	

HLVP11.96 / HLVP5

Vacuum Pump



Main Features

- Flow range: 8.5 - 10L/min
- Maintenance free
- Different motors available
- Enabling continuous duty operation
- Compact design



HLVP11.96



HLVP5

Typical Applications

- Environmental Monitoring
- Analytical Instruments
- Industrial Automation
- Medical Devices
- Consumer Electronics

Specifications

Model	Flow Rate	Negative Pressure	Motor Type	Voltage	Power	LxWxH (mm)	Web Page
HLVP11.96	≥8.5L/min	≤-0.09MPa	Brushless	24V	36W	110 x 46 x 77	
HLVP5	≥10L/min	≤-0.09MPa	Brushed/Brushless	12V/24V	10W	113 x 54 x 86	

KP26-V / KP32-V / KP48-V

Vacuum Pump



Main Features

- Flow range: 1 - 12L/min
- Maintenance free
- Different motors available
- Enabling continuous duty operation
- Motor lifespan of up to 20,000 hours



KP26-V



KP32-V



KP48-V

Typical Applications

- Environmental Monitoring
- Analytical Instruments
- Industrial Automation
- Medical Devices
- Consumer Electronics

Specifications

Model	Flow Rate	Negative Pressure	Motor Type	Voltage	Power	LxWxH (mm)	Web Page
KP26-V	≥1L/min	≤-0.06MPa	Brushless	6V/12V	2W	48 x 28 x 42	
KP32-V	≥5.5L/min	≤-0.06MPa	Brushless	12V/24V	8W	71 x 36 x 54	
KP48-V	≥12L/min	≤-0.075MPa	Brushless	12V/24V	20W	74 x 57 x 94	

HLVP10 / KVP15 / HLVP15

Vacuum Pump



Main Features

- Flow range: 6 - 20L/min
- Maintenance free
- Different motors available
- Enabling continuous duty operation
- Stable performance

Applications

- Environmental Monitoring
- Analytical Instruments
- Industrial Automation
- Medical Devices
- Consumer Electronics



Specifications

Model	Flow Rate	Negative Pressure	Motor Type	Voltage	Power	LxWxH (mm)	Web Page
HLVP10 (in series)	≥6L/min	≤-0.08MPa	Brushed/Brushless	12V/24V	12W	95 x 89 x 40	
HLVP10 (in parallel)	≥10L/min	≤-0.06MPa	Brushed/Brushless	12V/24V	12W		
HLVP10-P (in series)	≥8L/min	≤-0.09MPa	Brushless	24V	20W	139 x 89 x 40	
HLVP10-P (in parallel)	≥20L/min	≤-0.06MPa	Brushless	24V	30W		
KVP15 (in series)	≥10L/min	≤-0.092MPa	Brushless	12V/24V	12W	138 x 75 x 64	
KVP15 (in parallel)	≥15L/min	≤-0.075MPa	Brushless	12V/24V	12W		
HLVP15 (single head)	≥11L/min	≤-0.062MPa	Brushless	12V/24V	8W	75 x 61 x 40	
HLVP15 (in series)	≥11L/min	≤-0.062MPa	Brushless	12V/24V	10W	122 x 61 x 40	
HLVP15 (in parallel)	≥14L/min	≤-0.082MPa	Brushless	12V/24V	10W		

EDZP SERIES

Positive Air Pump



Main Features

- Flow range: 0.2 - 1L/min
- Maintenance free
- Compact design
- Low power consumption
- Low noise

Typical Applications

- Sphygmomanometers
- Consumer Electronics



EDZP1



EDZP02

Specifications

Model	Flow Rate	Positive Pressure	Motor Type	Voltage	Power	LxWxH (mm)	Web Page
EDZP1	≥1L/min	≥0.053MPa	Brushed	6V	2.5W	62 x 27 x 27	
EDZP02	≥0.2L/min	≥0.047MPa	Brushed	3V	1.5W	43 x 21 x 12	

KZP / KLZP6

Piston Air Pump



Main Features

- Flow range: 7 - 8L/min
- Maintenance free
- Different motors available
- Enabling continuous duty operation
- Compact design



KZP



KLZP6

Typical Applications

- Environmental Monitoring
- Medical Devices
- Industrial Automation
- Printing Machines

Specifications

Model	Flow Rate	Positive Pressure	Motor Type	Voltage	Power	LxWxH (mm)	Web Page
KZP	≥7L/min	≥0.2MPa	Brushless	12V/24V	12W	72 x 33 x 62	
KLZP6	≥8L/min	≥0.2MPa	Brushless	12V/24V	20W	96 x 59 x 86	

KP32-Z / KP48-Z

Piston Air Pump



Main Features

- Flow rate: 6~12L/min
- Maintenance free
- High output pressure
- Enabling continuous duty operation
- Motor lifespan of up to 20,000 hours



KP32-Z



KP48-Z

Typical Applications

- Environmental Monitoring
- Medical Devices
- Industrial Automation
- Printing Machines
- Consumer Electronics

Specifications

Model	Flow Rate	Positive Pressure	Motor Type	Voltage	Power	LxWxH (mm)	Web Page
KP32-Z	≥6L/min	≥0.18MPa	Brushless	12V/24V	15W	69 x 36 x 63	
KP48-Z	≥12L/min	≥0.28MPa	Brushless	12V/24V	20W	74 x 57 x 94	

KZP12 / KZP15 / KZP20

Piston Air Pump



Main Features

- Flow rate: 12 - 20L/min
- Maintenance free
- High output pressure
- Different motors available
- Enabling continuous duty operation

Typical Applications

- Environmental Monitoring
- Medical Devices
- Industrial Automation
- Printing Machines
- Consumer Electronics



Specifications

Model	Flow Rate	Positive Pressure	Motor Type	Voltage	Power	LxWxH (mm)	Web Page
KZP12	≥12L/min	≥0.35MPa	Brushless	12V/24V	30W	100 x 42 x 82	
KZP15	≥15L/min	≥0.4MPa	Brushless	12V/24V	35W	107 x 80 x 110	
KZP20	≥20L/min	≥0.3MPa	Brushless	24V	50W	107 x 50 x 104	

KLP180 SERIES

Diaphragm Liquid Pump



Main Features

- Flow range: 160 - 260ml/min
- Maintenance free
- Different motors available
- Enabling continuous duty operation
- Compact design

Typical Applications

- Printing Machines
- Medical Devices
- Analytical Instruments



Specifications

Model	Flow Rate	Suction Head	Pressure Head	Motor Type	Voltage	Power	LxWxH (mm)	Web Page
KLP180	≥160ml/min	≥2m	≥30m	Brushed	12V/24V	5W	59 x 36 x 40	
	≥240ml/min	≥2m	≥30m	Brushless			55 x 36 x 40	
KLP180P	≥200ml/min	≥3m	≥30m	Brushed	12V/24V	3W	59 x 36 x 40	
	≥260ml/min	≥3m	≥30m	Brushless			55 x 36 x 40	

KP26-L / KP32-L

Diaphragm Liquid Pump



Main Features

- Flow rate: 300 - 500ml/min
- Maintenance free
- Enabling continuous duty operation
- Compact design
- Motor lifespan of up to 10,000 hours



KP26-L



KP32-L

Typical Applications

- Printing Machines
- Medical Devices
- Analytical Instruments

Specifications

Model	Flow Rate	Suction Head	Pressure Head	Motor Type	Voltage	Power	LxWxH (mm)	Web Page
KP26-L	≥300ml/min	≥3m	≥30m	Brushless	6V/12V	3W	48 x 28 x 38	
KP32-L	≥500ml/min	≥4m	≥30m	Brushless	12V/24V	10W	71 x 36 x 60	

HLLP300 / KLLP300

Diaphragm Liquid Pump



Main Features

- Flow range: 280 - 300ml/min
- Maintenance free
- Different motors available
- Enabling continuous duty operation
- Compact design



HLLP300



KLLP300

Typical Applications

- Printing Machines
- Medical Devices
- Analytical Instruments

Specifications

Model	Flow Rate	Suction Head	Pressure Head	Motor Type	Voltage	Power	LxWxH (mm)	Web Page
HLLP300	≥300ml/min	≥2m	≥30m	Stepper	24V	24W	71 x 53 x 75	
KLLP300	≥280ml/min	≥5m	≥50m	Brushless	12V/24V	5W	63 x 38 x 41	

KLP01.30 / KLP01 / ELP01 / JET400



Diaphragm Liquid Pump

Main Features

- Flow range: 350 - 500ml/min
- Maintenance free
- Different motors available
- Different rubber materials available
- Enabling continuous duty operation

Typical Applications

- Printing Machines
- Medical Devices
- Analytical Instruments
- Consumer Electronics



Specifications

Model	Flow Rate	Suction Head	Pressure Head	Motor Type	Voltage	Power	LxWxH (mm)	Web Page
KLP01.30	≥400ml/min	≥4m	≥30m	Brushed/Brushless	12V/24V	6W	77 x 33 x 57	
KLP01	≥500ml/min	≥4m	≥30m	Brushed/Brushless	12V/24V	8W	77 x 33 x 57	
ELP01	≥400ml/min	≥2m	≥20m	Brushed	12V/24V	6W	87 x 33 x 57	
JET400	≥350ml/min	≥2m	≥30m	Brushed/Brushless	12V/24V	8W	76 x 33 x 56	

KLP02.60 / KLP02 / ELP02 / JET450



Diaphragm Liquid Pump

Main Features

- Flow range: 450 - 700ml/min
- Maintenance free
- Different motors available
- Different rubber materials available
- Enabling continuous duty operation

Typical Applications

- Printing Machines
- Medical Devices
- Analytical Instruments
- Consumer Electronics



Specifications

Model	Flow Rate	Suction Head	Pressure Head	Motor Type	Voltage	Power	LxWxH (mm)	Web Page
KLP02.60	≥500ml/min	≥4m	≥30m	Brushed/Brushless	12V/24V	8W	76 x 33 x 59	
KLP02	≥700ml/min	≥4m	≥30m	Brushed/Brushless	12V/24V	8W	95 x 32 x 60	
ELP02	≥600ml/min	≥2m	≥20m	Brushed	12V/24V	8W	87 x 33 x 57	
JET450	≥450ml/min	≥4m	≥30m	Brushed/Brushless	12V/24V	8W	77 x 33 x 57	

HLLP600 / KDLP600

Diaphragm Liquid Pump



Main Features

- Flow range: 200 - 800ml/min
- Maintenance free
- Different motors available
- Different rubber materials available
- Enabling continuous duty operation



HLLP600



KDLP600

Typical Applications

- Medical Devices
- Analytical Instruments
- Environmental Monitoring
- Agricultural Spraying

Specifications

Model	Flow Rate	Suction Head	Pressure Head	Motor Type	Voltage	Power	LxWxH (mm)	Web Page
HLLP600	≥800ml/min	≥2m	≥80m	Brushless	12V/24V	20W	82 x 59 x 77	
KDLP600	200-600ml/min	≥0.5m	≥30m	Stepper	12V/24V	20W	104 x 56 x 50	

KLP04 / EDLP1200

Diaphragm Liquid Pump



Main Features

- Flow range: 240 - 1000ml/min
- Maintenance free
- Different motors available
- Enabling continuous duty operation
- Compact design



KLP04



EDLP1200

Typical Applications

- Printing Machines
- Medical Devices
- Analytical Instruments
- Consumer Electronics

Specifications

Model	Flow Rate	Suction Head	Pressure Head	Motor Type	Voltage	Power	LxWxH (mm)	Web Page
KLP04	320±80ml/min	≥2m	≥5m	Brushless	12V/24V	3W	61 x 27 x 27	
EDLP1200	≥1000ml/min	≥2m	≥20m	Brushed	6V/12V	6W	75 x 36 x 27	

KDLP1200 / KLLP1000 / KLLP1800 / KLP40

Diaphragm Liquid Pump

Main Features





- High flow range: 1.4 - 4L/min
- Maintenance free
- Different motors available
- Enabling continuous duty operation



Typical Applications

- Environmental Monitoring
- Food and Beverage
- Industrial Automation
- Chemical Industry

Specifications

Model	Flow Rate	Suction Head	Pressure Head	Motor Type	Voltage	Power	LxWxH (mm)	Web Page
KDLP1200	≥1.8L/min	≥1m	≥50m	Brushless	12V/24V	20W	112 x 56 x 54	
KLLP1000	≥1.4L/min	≥2m	≥20m	Brushless	12V/24V	20W	102 x 81 x 60	
KLLP1800	≥1.5L/min	≥4m	≥20m	Brushless	24V	25W	85 x 73 x 48	
KLP40	≥4L/min	≥1m	≥50m	Brushed	12V/24V	60W	160 x 97 x 60	

KLP100 / EDLP600 / EDVP08

Diaphragm Pump

Main Features




- Liquid flow range: 100 - 600ml/min
- Suitable for both gases and liquids
- Maintenance free
- Different motors available
- Compact design



Typical Applications

- Chemical Industry
- Medical Devices
- Laboratory and Analysis
- Industrial Applications
- Hygiene

Specifications

Model	Air Flow	Liquid Flow	Suction Head	Pressure Head	Motor Type	Voltage	Power	LxWxH (mm)	Web Page
KLP100	≥200ml/min	≥100ml/min	≥2m	≥30m	Brushed	12V/24V	5W	57 x 35 x 37	
		≥150ml/min			Brushless	12V/24V		55 x 35 x 37	
	N/A	10-50ml/min	Stepper	24V	20W	62 x 35 x 39			
EDLP600	≥1000ml/min	≥500ml/min	≥2m	≥5m	Brushed	6V	5W	71 x 27 x 27	
		≥600ml/min				12V/24V			
EDVP08	≥800ml/min	300±80ml/min	≥2m	≥8m	Brushed	6V/12V	3W	53 x 19 x 19	
		400±80ml/min				24V			

KLVP6 SERIES

Diaphragm Pump

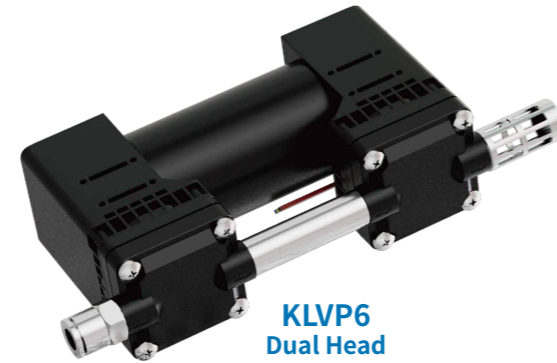


Main Features

- Gas flow rate: 6 - 12L/min
- Suitable for both gases and liquids
- Maintenance free
- High vacuum pressure
- Enabling continuous duty operation



KLVP6
Single Head



KLVP6
Dual Head

Typical Applications

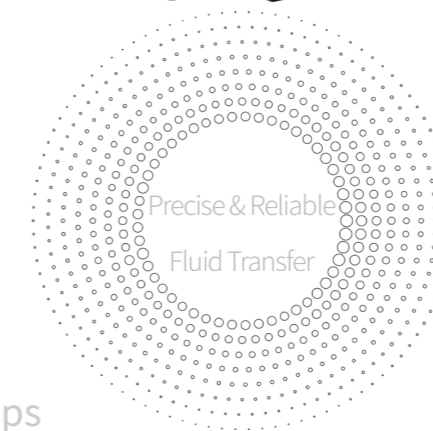
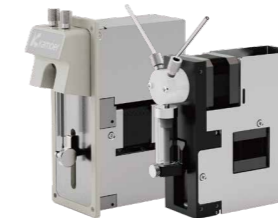
- Environmental Monitoring
- Analytical Instruments
- Industrial Automation
- Medical Devices

Specifications

Model	Air Flow	Air-liquid Ratio	Negative Pressure	Motor Type	Voltage	Power	LxWxH (mm)	Web Page
KLVP6 (single head)	≥6L/min	Liquid ≤ 60%	≤-0.082MPa	Brushless	12V/24V	15W	95x87x59	
KLVP6 (in series)	≥8L/min	N/A	≤-0.095MPa				141x44x81	
KLVP6 (in parallel)	≥12L/min	Liquid ≤ 60%	≤-0.082MPa				136x44x75	

Other Pumps

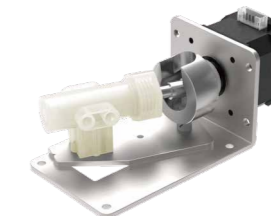
Syringe Pumps



Gear Pumps



Piston Pumps



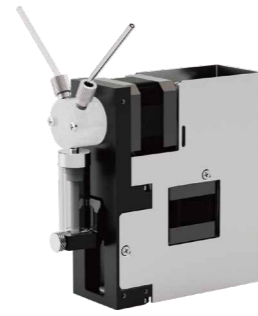
KSY SERIES

Syringe Pump



Main Features

- Syringe size: 0.05- 5ml
- Stepper motor drive
- High accuracy and precision
- Supports RS485 or RS232 communication
- Compact design



KSY30



KSY30E



KSY60E

Typical Applications

- Medical Devices
- Laboratory and Analysis
- Pharmaceutical

Specifications

Model	Syringe Size	Accuracy	Precision	Motor Type	Wetted Material	LxWxH (mm)	Web Page
KSY30	50μL, 100μL, 250μL, 500μL, 1ml, 2.5ml, 5ml	≤1.0%	≤0.05%	24V Stepper	Borosilicate Glass, PTFE, PCTFE	134x45 x 127	
KSY30E	1ml	≤2.0%	≤0.1%	24V Stepper	Borosilicate Glass, PTFE, PPS, EPDM	129x66 x 164	
KSY60E	1ml, 2.5ml	≤2.0%	≤0.08%	24V Stepper	Borosilicate Glass, PTFE, PPS, EPDM	129x68 x 224	

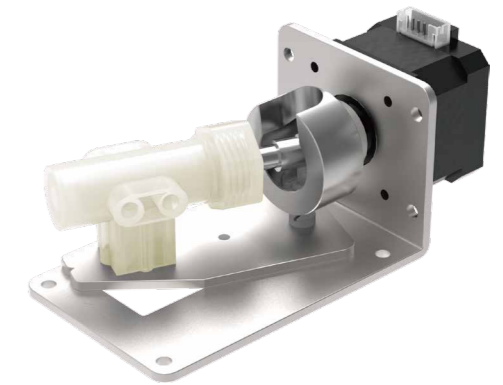
KPVP

Valveless Ceramic Piston Pump



Main Features

- Dispense volume: 100~300μL/shot
- Stepper motor drive
- High accuracy and precision
- Corrosion resistance
- Protection class IP66



KPVP

Typical Applications

- Medical Devices
- Laboratory and Analysis
- Pharmaceutical
- Food Equipments

Specifications

Model	Dispense Volume	Precision	Discharge Pressure	Motor Type	Wetted Material	LxWxH (mm)	Web Page
KPVP	100~300μL /shot	≤0.05%	150kPa	24V Stepper	PVDF, PTFE, ZrO2	137x64x55	

KGP200 / KGP2000

Gear Pump



Main Features

- Flow range: 240 - 2000ml/min
- Maintenance free
- Low power consumption
- Compact design
- Cost-effective



KGP200



KGP2000

Typical Applications

- Chemical Industry
- Industrial Applications
- Food and Beverage

Specifications

Model	Flow Rate	Positive Pressure	Motor Type	Voltage	Power	LxWxH (mm)	Web Page
KGP200	≥240ml/min	≥0.06MPa	Brushed	12V/24V	5W	67x30x30	
KGP2000	≥2000ml/min	≥0.08MPa	Brushed	24V	12W	128x36x40	

KMGP1000

Magnetic Drive Gear Pump



Main Features

- Flow range: 100 - 2000ml/min
- Pulsation-free and low noise
- Strong wet self-priming capability
- High output pressure
- Excellent sealing performance



KMGP1000

Typical Applications

- Medical Devices
- Laboratory and Analysis
- Printing Machines
- Industrial Applications

Specifications

Model	Flow Rate	Positive Pressure	Motor Type	Voltage	Power	LxWxH (mm)	Web Page
KMGP1000	100-900ml/min	≥0.5MPa	Brushless	24V	10W	102x74x94	
KMGP2000	200-2000ml/min	≥0.5MPa	Brushless	24V	30W	127x82x103	

Control Valves



KVEB Series Solenoid Valves

Model	Ports	DN	Pressure Rating	Voltage	Power	Body Material	Seal Material
KVE32PL12F15Q163	3	1.6mm	2bar	12V	3W	PEEK	FKM
KVE32PL24FF1Q163	3	1.6mm	2bar	24V	3W	PVDF	FFKM
KVE22PL24FF1Q163	2	1.6mm	2bar	12V	3W	PVDF	FFKM



KVEZ Series Solenoid Valves

Model	Ports	DN	Pressure Rating	Voltage	Power	Body Material	Seal Material
KVE23PL12FP3Q201	2	2.0mm	3bar	12V	3.3W	PPS	FPM
KVE23PL24FP3Q201	2	2.0mm	3bar	24V	3.3W	PPS	FPM
KVE33PL12FP3Q201	3	2.0mm	3bar	12V	3.3W	PPS	FPM
KVE33PL24FP3Q201	3	2.0mm	3bar	24V	3.3W	PPS	FPM
KVE24PL12EP4Q153	2	1.5mm	3.8bar	12V	3.4W	ETFE	EPDM
KVE24PL24EP4Q153	2	1.5mm	3.8bar	24V	3.4W	ETFE	EPDM
KVE34PL12EP4Q153	3	1.5mm	3.8bar	12V	3.4W	ETFE	EPDM
KVE34PL24EP4Q153	3	1.5mm	3.8bar	24V	3.4W	ETFE	EPDM
KVE24PL24EP5U151	2	1.5mm	3.8bar	24V	3.5W	PEEK	EPDM
KVE34PL24EP5U151	3	1.5mm	3.8bar	24V	3.5W	PEEK	EPDM

KVEY1 Series Solenoid Valves



Model	Ports	DN	Pressure Rating	Voltage	Power	Body Material	Seal Material
KVE27PL12E2N251(NC)	2	2.2mm	7bar	12V	6W	PP	NBR
KVE27PL24E2N251(NC)	2	2.2mm	7bar	24V	6W	PP	NBR
KVE27PL12E2K251(NC)	2	2.2mm	7bar	12V	6W	POM	NBR
KVE27PL24E2K251(NC)	2	2.2mm	7bar	24V	6W	POM	NBR

KVEY10 Series Solenoid Valves



Model	Ports	DN	Pressure Rating	Voltage	Power	Body Material	Seal Material
KVE21PS12N2N951A(NC)	2	9.5mm	8bar	12V	5W	PP	NBR
KVE21PS12N2N951B(NO)	2	9.5mm	8bar	12V	5W	PP	NBR
KVE21PS24N2N951A(NC)	2	9.5mm	8bar	24V	5.3W	PP	NBR
KVE21PS24N2N951B(NO)	2	9.5mm	8bar	24V	5.3W	PP	NBR

KVEY15 Series Solenoid Valves



Model	Ports	DN	Pressure Rating	Voltage	Power	Body Material	Seal Material
KVE315PS12VI6G151	2	1.5mm	15bar	12V	8W	H59-1	VITON
KVE315PS24VI6G151	2	1.5mm	15bar	24V	9.6W	H59-1	VITON

Pinch Valve Series



Model	Medium Temp	Response Time	Pressure Rating	Voltage	Power	Duty Cycle	Insulation Class
KVP2PL24S(1×3)SA50	5°C~50°C	≤100ms	1bar	24V	7W	Continuous	H
KVP2PL24S(6×9)SA50	0°C~50°C	≤30ms	1bar	24V	13W	Continuous	H



KSV Rotary Valve

Model	Medium Temp	Wetted Parts Material	Channel Diameter	Ports	Voltage	Power	Connection	Parameter Settings
KSV	0°C-80°C	PEEK	1.0mm	10	24V	15W	1/4-28UNF	RS232, RS485, CAN

Driver & Controllers

Product	Features	Image
4460.5 Stepper Control Driver	Input Voltage: 12V/24V; Current: 0-2A Supports 28/42 stepper motors (or NEMA 11/17 if applicable) Speed control modes: External potentiometer / Internal potentiometer / RS485 communication	
MODBUS-RTU Stepper Control Driver	Compact & powerful; aluminum housing (efficient cooling) Speed modes (4): Int/ext pot, 0-10v, modbus-rtu (rs485) Start/stop: Jog / trigger Industrial rs485; dc24v input Fits all Kamoer stepper peristaltic pumps	
KMD-542 Stepper Driver	Adjustable microstepping, up to 32 subdivisions Maximum output current: 3.5A Wide supply voltage range: 9-42V DC Control signal input: 3.3-24V H-bridge bipolar constant current drive Built-in thermal & overcurrent protection	
2802 Pulse Generator Control Board	High integration, high reliability Small size, rich interface and convenient layout Input voltage: DC 9 ~ 24V Support 485 communication, expand up to 15 pieces Two-way start and stop control, expandable peripherals	
KMD-42B-P Stepper Driver	Maximum input voltage: DC 28V Multiple subdivisions available (1/2, 1/4, 1/8, 1/16, 1/32, 1/64, 1/128, 1/256) Overheating automatic shutdown output protection Support offline, enable, lock and other functions	
CT001 DC Motor Control Board	Wide voltage input; settable parameters Reverse polarity protection User-friendly interface; e-stop button	
3-Wire Brushless Speed Controller	Knob speed control Terminal connection For 12V/24V 3-wire brushless motor pumps	

Filter / Damper / Silencer

Filter Series



Model	Housing	Filter Element	Medium	Filtration Rating	Compatible Tube
KFL40	PMMA	Modified PP	Liquid	0.3mm	4mm(ID) flexible tube
KPF	Modified PP	Polymer	Air	20µm	5mm(ID)x8mm(OD) PVC/PU tube
ZFC	PA, PC	PE	Air/Nitrogen	10µm	Nylon/PU tube

Pulse Damper



Model	Housing	Diaphragm	Medium	Flow Range	Flow Loss
KLD	PPS	EPDM	Liquid	0.5~1L/min	Peristaltic pump: < 1% Diaphragm pump: < 9%

Silencer Series



Model	Flow Loss	Pressure Effect	Noise Reduction (dB)	Housing
KPS	Outlet: 3~4% Inlet: 1~2% Both: 4~5%	No impact	Outlet: 1~2 Inlet: 4~5 Both: 8~10	ABS
KDSP	About 2%	No impact	4~5	PP
HDSP	Outlet: 5~10% Inlet: 2~5% Both: 15~20%	No impact	Outlet: 2~3 Inlet: 1~2 Both: 5~8	PA66









Vibration Damper Series







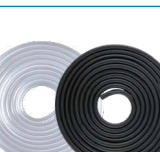
Model	Material	Application
JZYT Vibration Damping Table	Metal	KVP8/KVP8 PLUS/HLVP8 series pumps
KZDP/KVDP Vibration Damper	Mounting Plate: SS304 Rubber Damper: EPDM	KVDP: Outer rotor brushless motor pumps KZDP: KZP15/KZP25 series pumps
Rubber Shock Pads	Natural rubber, aluminum alloy shell, ABS fireproof material	Kamoer diaphragm pumps
Shock-absorbing Bracket	EPDM	Kamoer diaphragm pumps
Diaphragm Pump Bracket	EPDM	KVP04/KLP04/KLC2/EDLP600 series pumps

Pump Tubing

Perx® Pump Tubing





Model	Colour	Temperature	Lifetime	Features	Image
G55	Black	-40°C~130°C	800h	Peristaltic pump specific; Long service life; Stable flow rate; Reduces frequent calibration; Excellent chemical resistance; UV-resistant black; Low gas permeability	
P60	Beige	-50°C~140°C	800h	Peristaltic pump specific; Long service life; Autoclavable (offline/in-situ); Biocompatible; Manufactured in ISO Class 7 cleanroom	
GP6000	Beige	-50°C~140°C	800h	Peristaltic pump specific; Long service life; Stable flow rate; Reduces frequent calibration; Excellent chemical resistance; UV-resistant; Low gas permeability	
F60	Beige	-50°C~140°C	800h	Peristaltic pump specific; Long service life; Stable flow rate; Reduces frequent calibration; Food grade; UV-resistant black; Low gas permeability	
3500	Yellow transparent	-30°C~70°C	800h	Good chemical resistance; Low fuel permeability; Swelling, ozone & UV resistant	
4500	Transparent	-40°C~130°C	800h	Good chemical resistance; Peristaltic pump compatible; Anti-swelling; Plasticizer-free	
MED65	White transparent	-30°C~70°C	800h	Suitable for body fluid contact; DEHP-Free; Multi-Sterilization compatible; Cleanroom manufactured	
GW55	Beige	-50°C~140°C	800h	Peristaltic pump specific; Long service life; Stable flow rate; Reduces frequent calibration; Excellent chemical resistance; UV-resistant; Low gas permeability	

Kamoer Pump Tubing

Model	Colour	Temperature	Lifetime	Features	Image
Silicone	Transparent	-60°C~200°C	200h	Low adsorption; Good wear resistance; Not easy to age; Low precipitates	
Teflon	Transparent	-200°C~200°C	1000h	Water & oil repellent; High insulation & flame retardancy; Non-toxic; Corrosion resistant	
PU	Black	-25°C~70°C	200h	High elasticity; High elongation; Good damping properties; Oil, abrasion, aging & tear resistant	
PVC	Transparent/Colorful	0°C~70°C	1000h	Glossy surface; Elastic; UV resistant (protects sensitive fluids)	
UV Ink	Black/White	0°C~100°C	200h	Corrosion resistant; High temperature resistant; MEK & acetone resistant	



Saint-Gobain Pump Tubing

Model	Colour	Temperature	Lifetime	Features	Image
PharMed® BPT	Beige	-60°C~135°C	1000h	Good general chemical resistance; Excellent resistance to acids, alkalis & oxides; UV resistant (protects sensitive fluids)	
Norprene®	Beige/Black	-60°C~135°C	1000h	Resistant to most food-grade sanitizers; Good UV resistance; Repeatedly autoclavable; Broad chemical resistance; FDA, 3A & NSF compliant	
Tygon®	Yellow	-37°C~74°C	70h	Embrittlement resistant; Most Petroleum product compatible; Ozone & UV resistant	
Versilon™	Black	-32°C~205°C	500h	Oil, fuel, lubricant & mineral acid resistant; Weather/Sunlight resistant; High temperature resistant	



Perx® Tubing Selection

Model	Size Code	Inner Diameter (mm)	Inner Diameter (mm)	Wall Thickness (mm)
G55 P60 GP6000 F60	14#	1.6	4.8	1.6
	19#	2.4	5.6	
	16#	3.2	6.4	
	25#	4.8	8.0	
3500 4500 MED65 GW55	18#	7.9	11.1	2.38
	24#	6.35	11.1	
	04#	1.0	3.0	
	12#	1.5	3.5	
	06#	2.0	4.0	
	08#	2.5	4.5	1.0
	10#	3.0	5.0	
	22#	4.0	6.0	

Kamoer Tubing Selection

Model	Size Code	Inner Diameter (mm)	Inner Diameter (mm)	Wall Thickness (mm)
Silicone	04#	1.0	3.0	1.0
	06#	2.0	4.0	
	08#	2.5	4.5	
	10#	3.0	5.0	
	22#	4.0	6.0	1.5
	28#	5.0	8.0	
	13#	0.8	4.0	1.6
	19#	2.4	5.6	
	16#	3.2	6.4	
	40#	4.0	7.2	
	25#	4.8	8.0	
	Teflon	17#	6.4	9.6
15#		4.8	9.8	
06#		2.0	4.0	
10#		3.0	5.0	
PU	22#	4.0	6.0	1.0
	/	6.5	10.0	
	28#	5.0	8.0	1.75
	/	6.5	10.0	
	/	6.5	10.0	
PVC	6#	2.0	4.0	1.0
	10#	3.0	5.0	
	22#	4.0	6.0	
UV Ink	/	3.2	5.4	1.1

Saint-Gobain Tubing Selection

Model	Size Code	Inner Diameter (mm)	Inner Diameter (mm)	Wall Thickness (mm)
PharMed® BPT	/	1.6	3.2	0.8
	/	2.06	3.78	0.86
	12#	1.5	3.5	1.0
	06#	2.0	4.0	
	08#	2.5	4.5	
	22#	4.0	6.0	
	/	1.0	3.2	1.1
	13#	0.8	4.0	1.6
	14#	1.6	4.8	
	19#	2.4	5.6	
	16#	3.2	6.4	
	40#	4.0	7.2	
	25#	4.8	8.0	
	17#	6.4	9.6	1.6
14#	1.6	4.8		
19#	2.4	5.6		
16#	3.2	6.4		
40#	4.0	7.2		
25#	4.8	8.0		
17#	6.4	9.6	2.5	
28#	6.4	11.4	2.5	
Norprene® Teflon lined	16#	3.2	6.4	1.6
	25#	4.8	8.0	
	17#	6.4	9.6	
Tygon® F4040-A	06#	2.0	4.0	1.0
Versilon™	/	3.1	6.3	1.6


Tubing Connectors

Straight Connectors




Model	Connectable ID
1/16	0.4~1.6 mm
3/32	1.0~2.5 mm
1/8	1.6~3.2 mm
5/32	2.4~4.5 mm
3/16	4.0~5.0 mm
1/4	4.8~7.0 mm
3/8	8.0~9.5 mm
3/32-5/32	(1.0~2.5)-(2.4~4.5) mm
1/8-1/16	(1.6~3.2)-(0.4~1.6) mm
1/8-1/16	(1.6~3.2)-(0.4~1.6) mm
1/8-3/32	(1.6~3.2)-(1.0~2.5) mm
1/8-5/32	(1.6~3.2)-(2.4~4.5) mm
1/8-3/16	(1.6~3.2)-(4.0~5.0) mm
1/8-1/4	(1.6~3.2)-(4.8~7.0) mm

L Connectors




Model	Connectable ID
1/16	0.4~1.6 mm
3/32	1.0~2.5 mm
1/8	1.6~3.2 mm
5/32	2.4~4.5 mm
3/16	4.0~5.0 mm
1/4	4.8~7.0 mm
5/16	6.4~8.0 mm

Y Connectors




Model	Connectable ID
1/16	0.4~1.6 mm
3/32	1.0~2.5 mm
1/8	1.6~3.2 mm
5/32	2.4~4.5 mm
3/16	4.0~5.0 mm
1/4	4.8~7.0 mm
5/16	7.0~8.2 mm
3/8	8.0~9.5 mm

T Connectors



Model	Connectable ID
1/16	0.4~1.6 mm
3/32	1.0~2.5 mm
1/8	1.6~3.2 mm
3/16	4.0~5.0 mm
1/4	4.8~7.0 mm
5/16	7.0~8.2 mm

Cross Connectors



Model	Connectable ID
1/16	0.4~1.6 mm
1/8	1.6~3.2 mm

Luers



Model	Connectable ID
1/16	0.4~1.6 mm
3/32	1.0~2.5 mm
1/8	1.6~3.2 mm
5/32	2.4~4.5 mm

Check Valves



Model	Connectable ID
3/32	1.0~2.5 mm
1/8	1.6~3.2 mm
5/32	2.4~4.5 mm
3/16	4.0~5.0 mm
1/4	4.8~7.0 mm
3/32-5/32	(1.0~2.5)-(2.4~4.5) mm

Threaded Connectors



Model	Connectable Size
KSPC6-01 (1/8)	4mm(ID)x6mm(OD)
KSPC8-01 (1/8)	5mm(ID)x8mm(OD)
KSPC10-01 (1/8)	6.4mm(ID)x9.6mm(OD)

Barb-to-Female Adapter



Model	Connectable ID
1/16	0.8~1.6 mm
3/32	1.6~2.4 mm
1/8	2.4~3.2 mm

Common Units Conversion Table

Pressure Units Conversion Table								
Unit	Pa	kPa	MPa	bar	mbar	mmH ₂ O	mmHg	psi
1 Pa	1	10 ⁻³	10 ⁻⁶	10 ⁻⁵	10 ⁻²	0.102	7.5x10 ⁻³	1.45 x 10 ⁻⁴
1 kPa	10 ³	1	10 ⁻³	10 ⁻²	10	1.02 x 10 ²	7.5	0.145
1 MPa	10 ⁶	10 ³	1	10	10 ⁴	1.02 x 10 ⁵	7.5 x 10 ³	1.5 x 10 ²
1 bar	10 ⁵	10 ²	10 ⁻¹	1	10 ³	1.02 x 10 ⁴	7.5 x 10 ²	14.5
1 mbar	10 ²	10 ⁻¹	10 ⁻⁴	10 ⁻³	1	10.2	0.75	1.45 x 10 ⁻²
1 mmH ₂ O	9.8	9.8 x 10 ⁻³	9.8 x 10 ⁻⁶	9.8 x 10 ⁻⁵	9.8 x 10 ⁻²	1	7.36 x 10 ⁻²	1.42 x 10 ⁻³
1 mmHg	133.32	0.133	1.33 x 10 ⁻⁴	1.33 x 10 ⁻³	1.33	13.6	1	1.93 x 10 ⁻²
1 psi	6.89 x 10 ³	6.89	6.89 x 10 ⁻³	6.89 x 10 ⁻²	68.95	703.07	51.71	1

Flow Rate Units Conversion Table						
Unit	mL/min	L/min	L/h	GPM	m ³ /h	CFM
1 mL/min	1	10 ⁻³	0.06	2.64 x 10 ⁻⁴	6 x 10 ⁻⁵	3.53 x 10 ⁻⁵
1 L/min	10 ³	1	60	0.264	6 x 10 ⁻²	3.53 x 10 ⁻²
1 L/h	16.67	1.67 x 10 ⁻²	1	4.4 x 10 ⁻³	10 ⁻³	5.89 x 10 ⁻⁴
1 GPM	3.79 x 10 ³	3.79	2.27 x 10 ²	1	0.227	0.134
1 m ³ /h	1.67 x 10 ⁴	16.67	10 ³	4.4	1	0.589
1 CFM	2.83 x 10 ⁴	28.32	1.7 x 10 ³	7.48	1.7	1